



For The Record



FTR Reporter Server™

Installation Guide

Version 7.0

For Windows® Server 2008 R2

For Windows® Server 2012 R2

For Windows® Server 2016 Standard

www.fortherecord.com

Table of Contents

Prerequisites	3
Installing FTR Reporter Server™	3
Using the installation wizard.....	3
Installing from the command line	10
Additional Configuration Tools.....	11
Replication Configuration Tool.....	11
Reporter Server Configuration Tool.....	11
General Settings	11
Recorder Settings	12

Prerequisites

The following items are required to complete the installation.

- Windows Server 2008 R2, 2012 R2, or 2016 Standard
- FTR supported audio capture device
- FTR supported IP video capture device

Note: If you are also installing FTR Monitoring Suite, please refer to the Setup Guide Gold 7.0 FTR Monitoring Suite for installation information.

Installing FTR Reporter Server™

There are two methods for installing FTR Reporter Server:

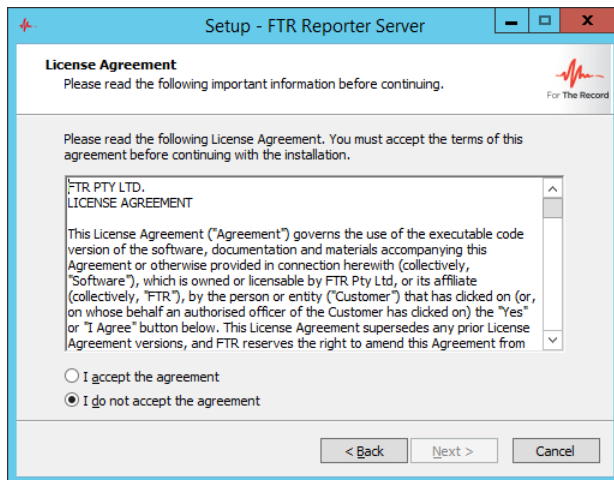
- installation by user interface, or
- installation by command line.

Using the installation wizard

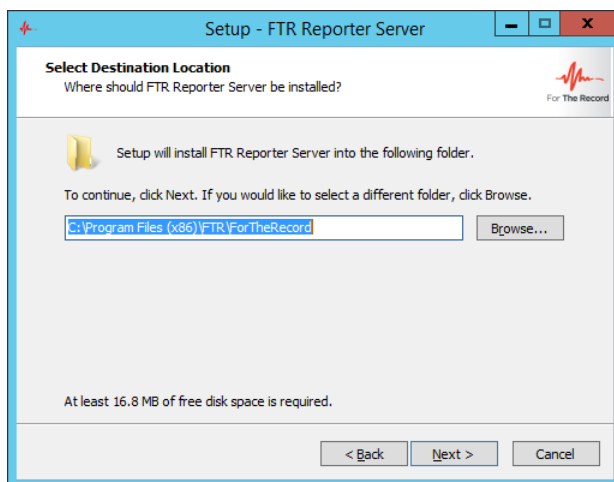
1. From the Installation Menu click Install Reporter Server, then from the **Welcome** dialog box click **Next**.



- From the **License Agreement** dialog box, click **I accept the agreement** if you agree with the terms of the license and click **Next**.

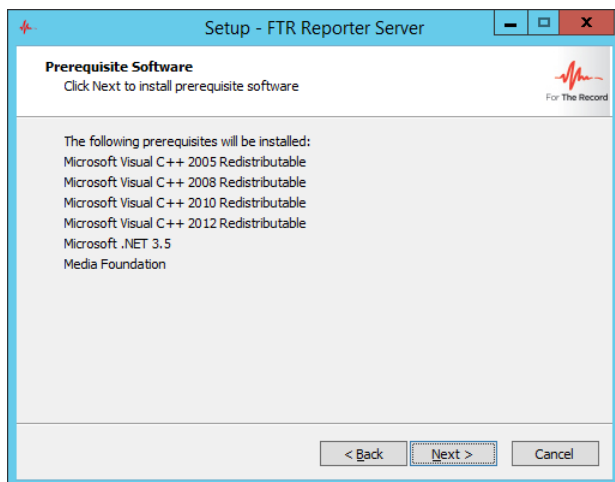


- From the **Select Destination Location** dialog box, enter the folder in which FTR Reporter Server will be installed and click **Next**.

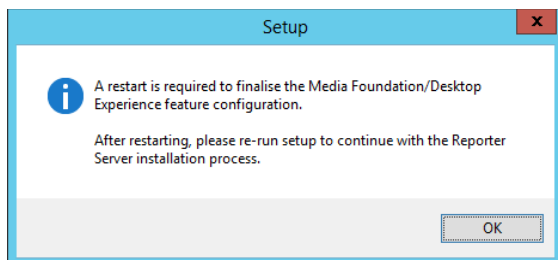


4. From the **Prerequisite Software** dialog box, click **Next** to install the listed items.

Note: The following example will occur if you are installing Reporter Server on a fresh Windows Server 2012 R2 machine.



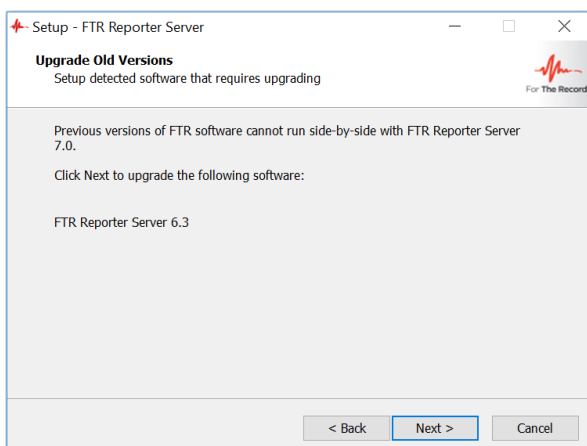
Note: After Media Foundation/Desktop Experience has been enabled the following advisory notice will be displayed.



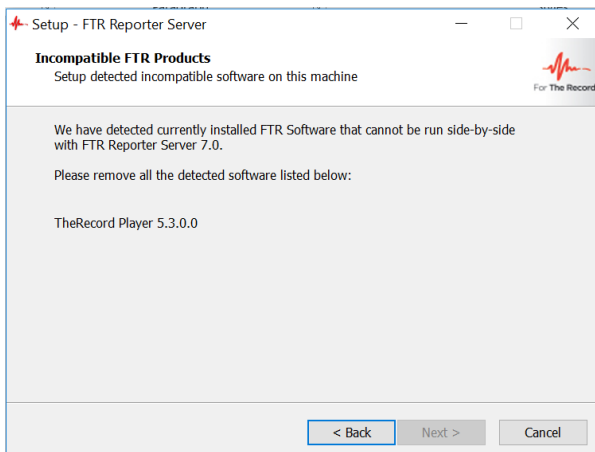
After all prerequisites are installed, the following dialogs are displayed.

5. Remove Previous Version page. There are 3 possible scenarios:

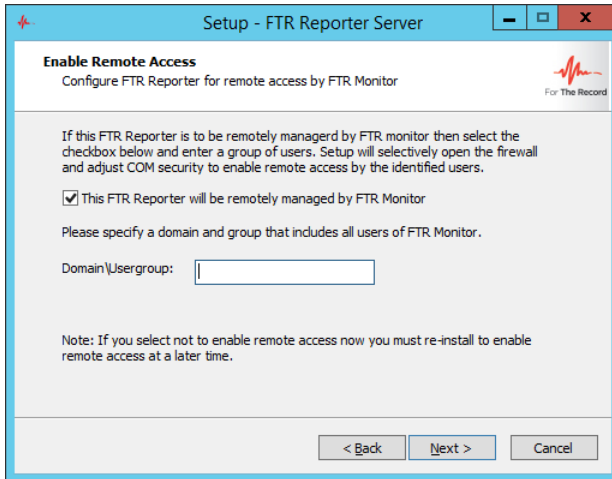
- a. If an upgradable version of FTR Reporter Server is installed, e.g. version 5.6.1, version 5.6.2, or version 6.0 and above, the following dialog box will be displayed. Click next to proceed with installing version 7.0.



- b. If FTR Monitoring Suite version 7.0 is installed, no **Remove Previous Version** page will be displayed and the installation of FTR Reporter Server version 7.0 will proceed.
- c. If any other FTR software is installed, e.g. an old version of FTR Reporter Server or an old version of FTR Monitor, the following dialog box will be displayed. Either click **Back** to return to the previous installation page, remove the non-upgradable FTR software, then proceed with the installation, or click **Cancel** to cancel the installation, remove the non-upgradable FTR software, then restart the installation.



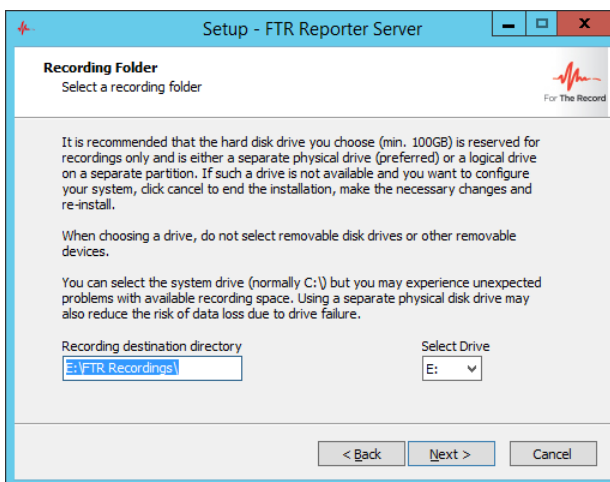
- From the **Enable Remote Access** dialog box, do the following:
 The check box is selected by default (**This FTR Reporter will...**). Be sure to leave this check selected.
 Enter a domain and user group (user group is a domain user security group) for all Monitor users that will connect to the Hosted Recorders that are configured by this installation of Reporter Server.



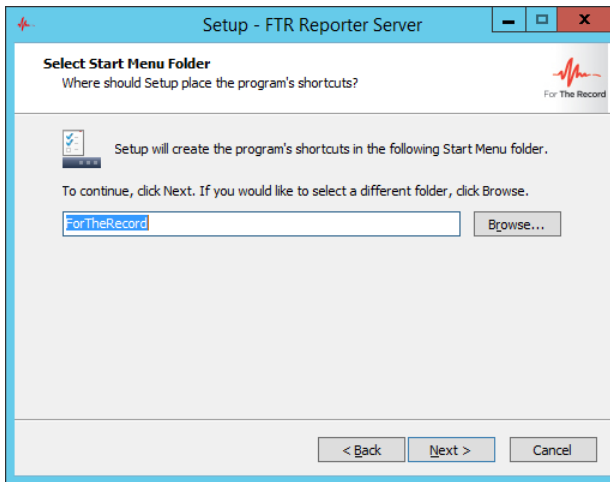
NOTE: These Monitor users will have read-only access to the Recordings folder by default which could be changed on the folder level if required. Refer to supporting documentation for accompanying product FTR Monitor™ for more information on remote recording and monitoring.

CAUTION: The name given to the remote-access group on your domain is not important; however, that group name must not change. If the group name is changed on your domain, you must reinstall Reporter Server for remote access to work again.

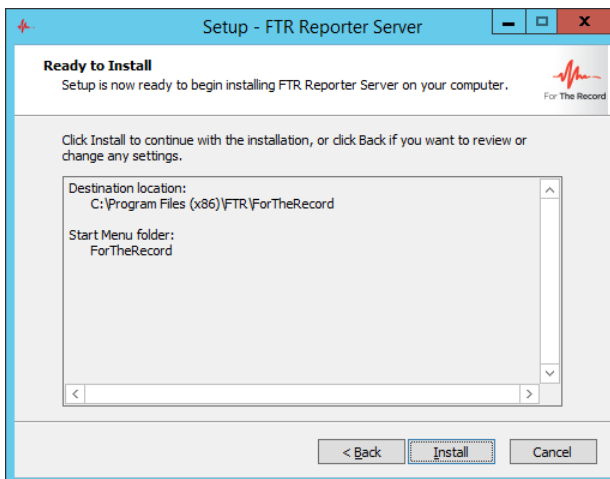
- From the **Recording Folder** dialog box, select the drive then click **Next**.



8. From the **Select Start Menu Folder** dialog box, enter the start menu folder and click **Next**.

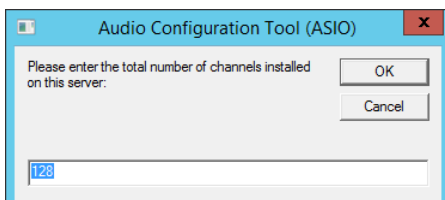


9. On the **Ready to Install** dialog box, verify the Destination and Start Menu folders and click **Install**.

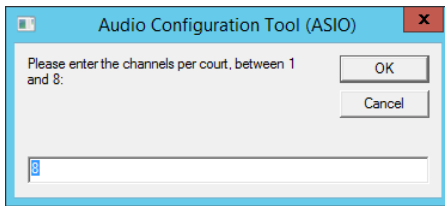


10. As the installation completes, the **Audio Configuration Tool (ASIO)** launches to enable setup of audio channels.

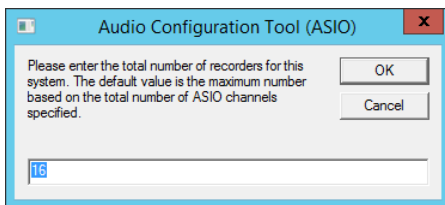
Enter the total number of audio channels configured on your ASIO audio device that is installed on the server for recording. Click **OK** to continue.



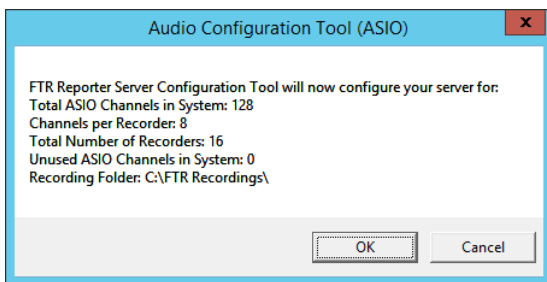
Enter the number of channels per court that you wish to record. Click **OK** to continue.



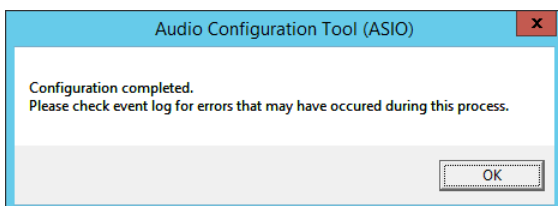
Enter the number of recorders that will be configured on this reporter server. Click **OK** to continue.



From the summary dialog box, check the details and click **Ok**.



Click Ok to close the FTR Reporter Server Configuration Tool.



11. Complete the FTR Reporter Server set up. Click **Finish**.



Installing from the command line

For enterprise-wide, large deployments, it may be useful to silently install FTR Reporter Server. To silently install, run FTR Reporter Server with /Silent or /VerySilent parameters from the command line.

- /Silent runs the installer and shows a progress bar indicating the status of installation process. It still doesn't need the user to interact with it.
- /VerySilent does everything in the background and you won't see anything (Except a short progress bar for Visual C++ Redistributables 2005).

Note: Net 3.5 must be enabled prior to silent installation of FTR Reporter Server.

Other parameters for silent installation:

Mandatory Parameter (case insensitive)	Comment
/MonitorGroup="<Domain/Group setting>"	Set this to the Active Directory user group that you want to allow to remotely control recording.
/RecordingDrive="<Recording Drive>"	Sets the recordings' drive and appends "FTR Recordings" to it. Default value: "C:\"
/ChannelsPerRecorder="<Number>"	Sets the number of channels per court (between 1 and 16).
/Recorders="<Number>"	Sets the total number of recorders for this system.
/TotalChannels+"<Number>"	Sets the total number of channels installed on this server.

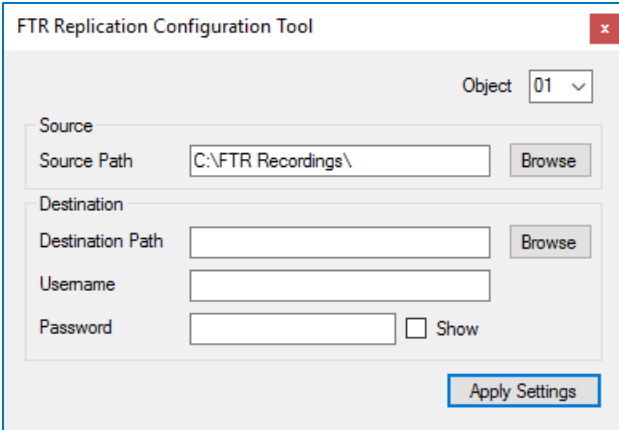
Example:

```
[Drive]:\Recording Suite Full Installer\FTR Reporter Server.exe /VerySilent /MonitorGroup="Domain\Group" /RecordingDrive="D:\" /ChannelsPerRecorder=2 /Recorders=4 /TotalChannels=8
```

Additional Configuration Tools

Replication Configuration Tool

This tool is used to configure the replication of recorded content.



1. Select the **Recorder Object** from the list. Object 1 will be Recorder 1, to Object 20 which will be Recorder 20.
2. Select the **Source Path**. The Source Path will be the local recording's path for that Recorder e.g. Object1 will be [drive]:\FTR Recordings\01 and Object 20 will be [drive]:\FTR Recordings\20.
3. Select the **Destination Path** (Archive) for that recorder as a UNC path e.g. \\Server\Share\FTR Recordings.
4. Enter the **Username** with read\write\modify permissions to the Destination Path in the format Domain\Username.
5. Enter the **Password** of the Username above.
6. Click **Apply Settings**.
7. Repeat steps 1-6 for each Recorder.

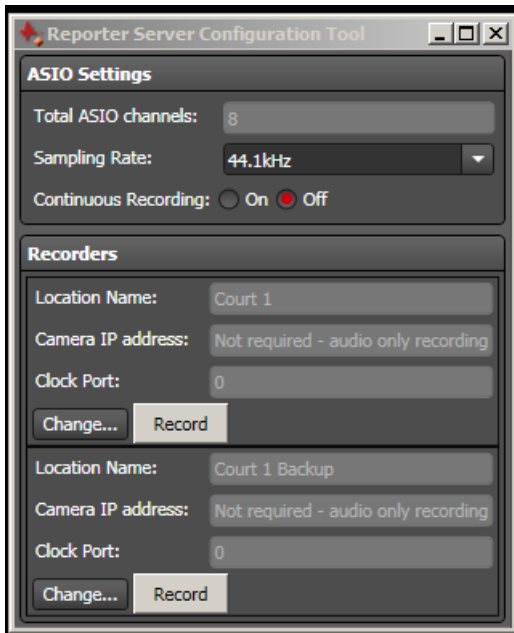
Reporter Server Configuration Tool

This tool is used to configure advanced properties of the recorders.

General Settings

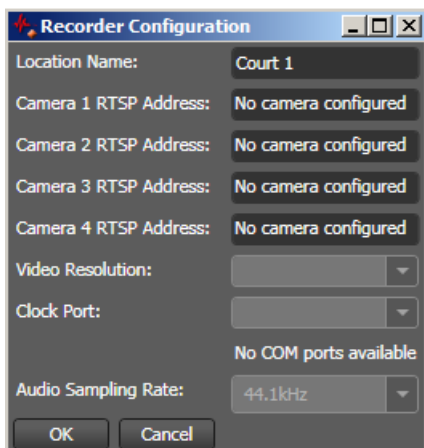
These settings apply to all recorders.

- Sampling Rate – The configured audio sample rate for all recorders.
- Continuous Recording- This configures all the recorders to start when Windows starts and record 24x7.



Recorder Settings

- Change – changes recorder specific settings, see below
- Record – Starts\Stops recording on the selected recorder



1. **Location Name** – Enter the name of the Recorder.
2. **Camera 1 RTSP Address** – Enter the RTSP URL of the first camera.
3. **Camera 2 RTSP Address** – Enter the RTSP URL of the second camera.
4. **Camera 3 RTSP Address** – Enter the RTSP URL of the third camera.
5. **Camera 4 RTSP Address** – Enter the RTSP URL of the fourth camera.
6. **Video Resolution** – select the resolution of the recorded video.
7. **Clock Port** – select the required port that is used by the FTR clock for this recorder.
8. **Audio Sampling Rate** – For illustrative purposes only – configured globally, depending on the Sampling Rate setting.